

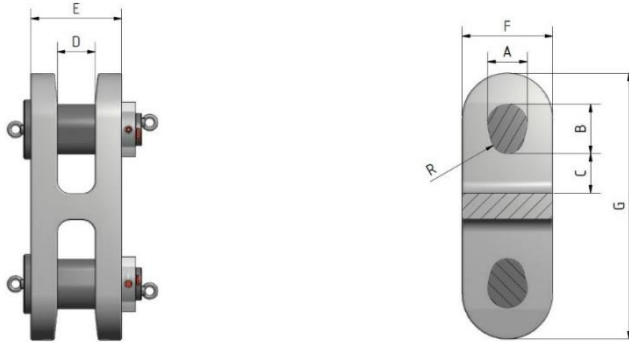
# Links



## H-Links

Type Approved by DNV-GL

Offshore accessory to be used for Temporary, Mobile and Long Term Mooring



chain dia.	A	B	C	D	E	F	G	R	R3 PL kN	R3 MBL kN	R3S PL kN	R3S MBL kN	R4 PL kN	R4 MBL kN	R4S PL kN	R4S MBL kN	R5 PL kN	R5 MBL kN
70	84	105	84	81	193	193	567	35,0	2935	4196	3387	4685	4064	5156	4516	5720	4723	6021
72	86	108	86	83	198	198	583	36,0	3092	4421	3568	4936	4282	5432	4758	6026	4976	6344
74	89	111	89	85	204	204	599	37,0	3253	4650	3753	5192	4504	5714	5005	6339	5234	6673
76	91	114	91	87	209	209	616	38,0	3417	4884	3942	5454	4731	6001	5257	6658	5498	7009
78	94	117	94	90	215	215	632	39,0	3584	5123	4135	5720	4962	6295	5514	6984	5766	7351
80	96	120	96	92	220	220	648	40,0	3754	5366	4332	5992	5198	6594	5775	7315	6040	7700
82	98	123	98	94	226	226	664	41,0	3927	5614	4531	6268	5438	6898	6042	7653	6319	8056
84	101	126	101	97	231	231	680	42,0	4104	5866	4735	6550	5682	7208	6313	7997	6602	8418
86	103	129	103	99	237	237	697	43,0	4283	6122	4942	6836	5930	7522	6589	8346	6891	8785
88	106	132	106	101	242	242	713	44,0	4465	6383	5152	7127	6182	7842	6869	8701	7184	9159
89	107	134	107	102	245	245	721	44,5	4557	6514	5258	7274	6310	8004	7011	8881	7332	9348
90	108	135	108	104	248	248	729	45,0	4650	6647	5365	7422	6439	8167	7154	9062	7482	9539
92	110	138	110	106	253	253	745	46,0	4838	6916	5582	7722	6699	8497	7443	9428	7784	9924
94	113	141	113	108	259	259	761	47,0	5028	7188	5802	8026	6962	8832	7736	9799	8091	10315
95	114	143	114	109	261	261	770	47,5	5125	7326	5913	8180	7096	9001	7884	9987	8246	10512
96	115	144	115	110	264	264	778	48,0	5222	7464	6025	8335	7230	9171	8033	10176	8402	10711
98	118	147	118	113	270	270	794	49,0	5418	7744	6251	8647	7501	9515	8335	10557	8717	11113
100	120	150	120	115	275	275	810	50,0	5616	8028	6480	8964	7776	9864	8640	10944	9036	11520
102	122	153	122	117	281	281	826	51,0	5817	8315	6712	9285	8054	10217	8949	11336	9359	11932
105	126	158	126	121	289	289	851	52,5	6123	8753	7065	9773	8478	10754	9420	11932	9851	12560
108	130	162	130	124	297	297	875	54,0	6434	9197	7424	10270	8909	11301	9899	12538	10352	13198
114	137	171	137	131	314	314	923	57,0	7071	10109	8159	11287	9791	12420	10879	13780	11378	14506
117	140	176	140	135	322	322	948	58,5	7397	10574	8535	11807	10242	12993	11380	14415	11902	15174
120	144	180	144	138	330	330	972	60,0	7728	11047	8916	12334	10700	13573	11889	15059	12434	15852
127	152	191	152	146	349	349	1029	63,5	8515	12171	9824	13591	11789	14955	13099	16592	13700	17466
133	160	200	160	153	366	366	1077	66,5	9206	13159	10622	14694	12746	16169	14163	17939	14812	18883
146	175	219	175	168	402	402	1183	73,0	10747	15363	12401	17154	14881	18877	16534	20944	17292	22046
152	182	228	182	175	418	418	1231	76,0	11476	16405	13241	18317	15890	20156	17655	22363	18464	23540

Type Approved by:

DNV-GL

Application:

Temporary, Mobile and Long Term Mooring

Manufactured & Tested: in Germany by Feubo

Material:

Forged Steel - Grade R3, R3S, R4, R4S, R5

Features:

Used to connect common links/enlarged links/ end links of SLAC and studless chain

